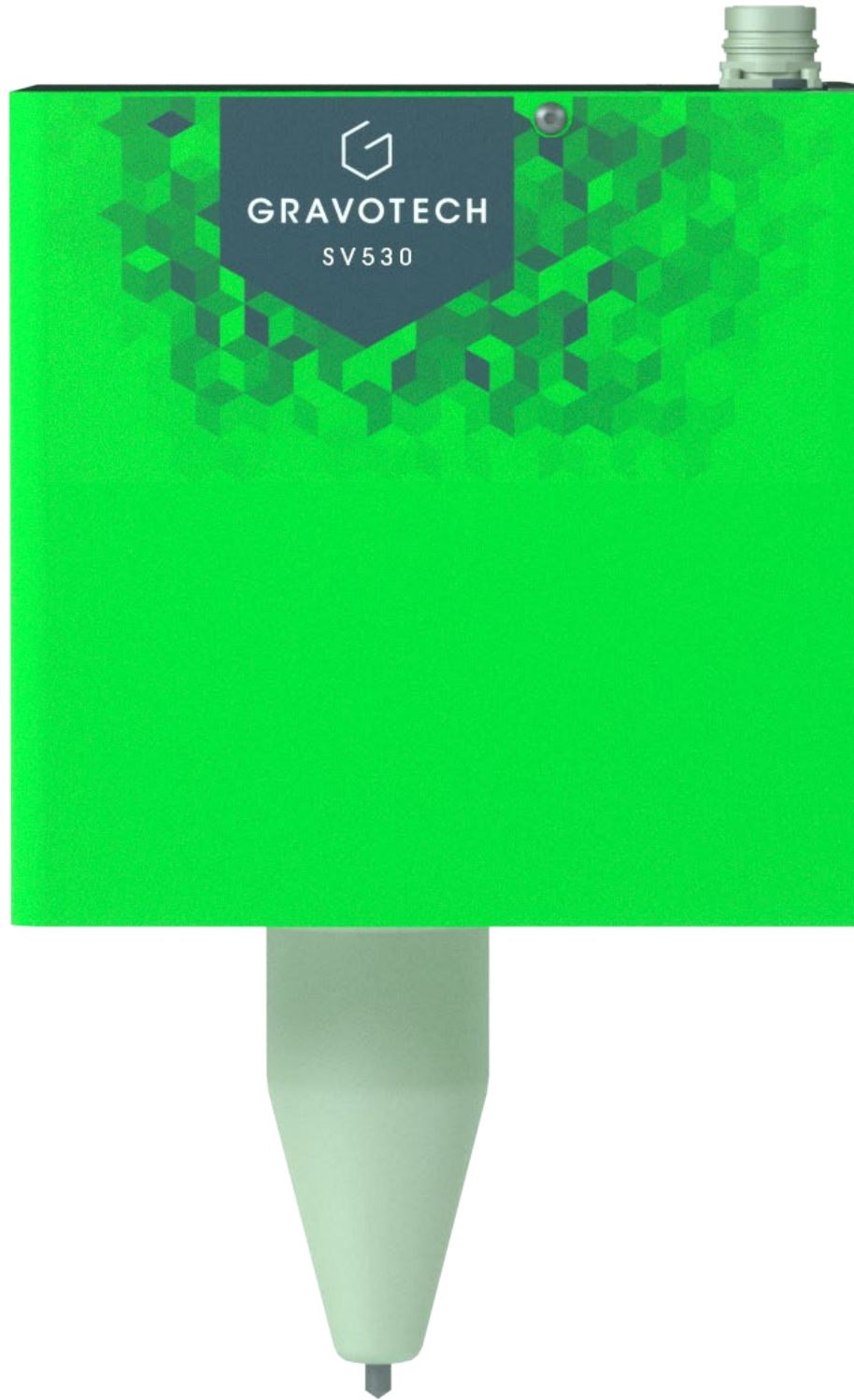




INTEGRABLE SCRIBING

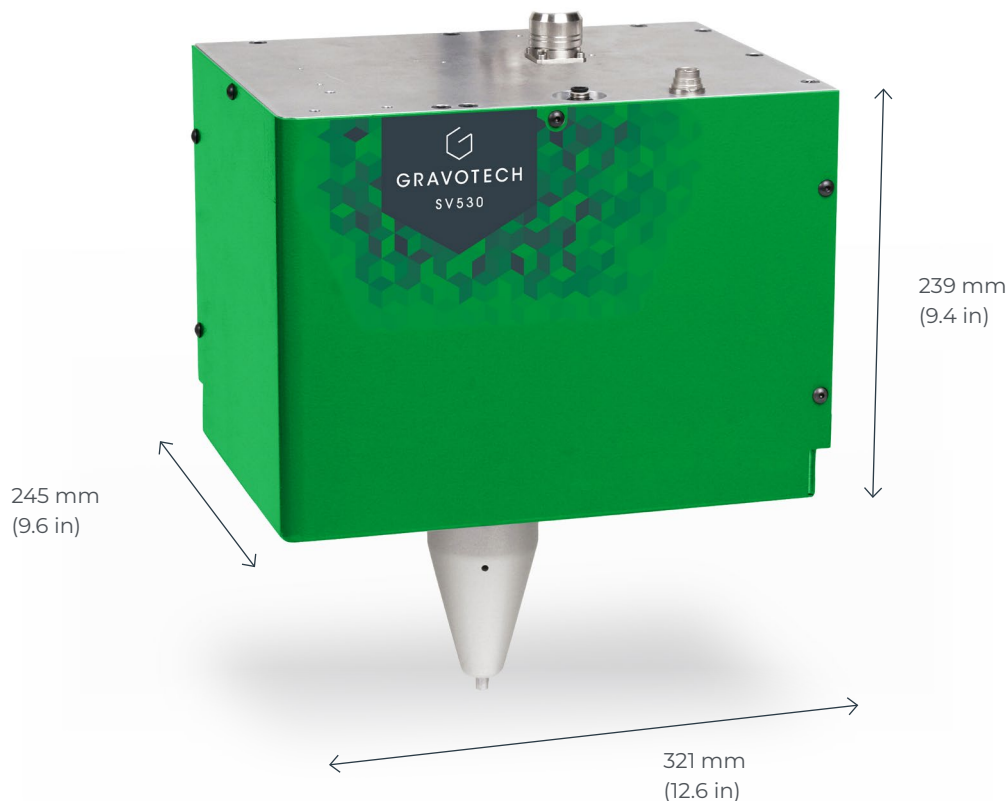
SV530



GRAVOTECH
EXPRESSION OF THINGS



SV530 scribing engraves sharp and deep characters, up to 0.3mm depth on metals, perfect for VIN marking. Designed for the toughest environments to meet your every need, SV530 is integrable in any production line.



VIN ENGRAVING MACHINE

The Vehicle Identification Number (VIN) marking on chassis requires a reliable engraving machine, able to perform deep marking on all materials, from soft, such as aluminum to the hardest steels. Our SV scribing machine range has been used for more than 20 years with automotive and transportation products, proving fantastic mechanical durability and strength.

SILENT MARKING SYSTEM

Scribing technology performs silent marking on formed plates (chassis and body parts) when these objects will naturally resonate during rotary and dot-peen marking. The SV530 scribing marking machine creates a high quality, smooth and silent marking with depth, making it easier to proofread.

HIGH PERFORMANCE

Designed to combine depth with high performance and aesthetic results, our scribing marking machine has one of the best-marking depth/driving force ratios: mark 17 characters of 7mm high with up to 100kg of driving force on the X, Y and Z axes. A robust design provided with our tungsten carbide or diamond tips for deep marking before and after the treatment of parts.

SEE OUR VIDEO



KEY FEATURES



The industry's choice for direct part marking

With over 60,000 units sold around world and over 15 trillion marked characters, Gravotech marking machines have become the industry's go to choice for high-volume, high-speed direct part marking.

Designed for continuous use with minimum servicing time, the SV530 meets the industry's needs for deep and accurate marking and has a proven return on investment.



Dedicated VIN marking system

To ensure traceability and avoid counterfeit parts, the automobile industry systematically marks all the parts that make up a vehicle.

Required markings such as the VIN (Vehicle Identification Number) must appear in accordance with ISO standards on all cars leaving the factory. With the SV530, you have the warranty to reach the minimum depth defined in the standards (0.15 to 0.3 mm depending on countries).

Through its dedicated controller, the XCOM, this scribing marking machine fits your process.



Adaptable solution for heavy industry

The SV530 is the ideal solution for marking metal parts of various shapes and surface finishes, mainly for the following sectors:

- Automotive (VIN marking, chassis, etc.).
- Construction (metal framework, steel structure, etc.).

Our range of products can be transformed into a transportable solution to mark large parts and parts that cannot be dismantled, on fixed stations or scrolling vehicle lines with:

- Efficient holding of the machine on the element to be marked with systems clamping devices, part sensors.
- Attachements to bridge, gantry or robot handling with additional clamping system

LEARN MORE ABOUT THE SV530



CONTROLLER: XCOM



Simplified user experience

The XCOM controller looks like a tactile tablet (7"/18 cm) and is just as easy to use. From its tactile screen, the operator can quickly set up, edit, program templates, and launch markings. No PC required.

Hyperconnected XCOM

The ideal controller for industry 4.0. Just choose your preferred fieldbus (Profinet, Ethernet/IP) to integrate the XCOM to your process and benefit from a reduced commissioning time and full interoperability on your production line, whichever the PLC and devices used.

Empower your data

The data collection and storage feature in the XCOM simplifies the traceability of your products: generate history files, create dashboards to monitor machines, track your productivity, and set up preventive maintenance. This controller is a powerful tool that will save time, money, and headaches!

XCOM options and accessories



Fieldbus (Profinet or Ethernet/IP)

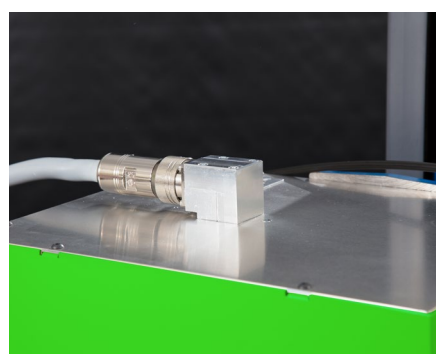


90° XCOM elbow connector



19" rack panel (4U)

ACCESSORIES



90° machine elbow connector

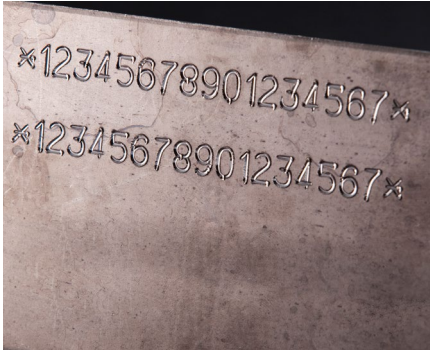


Various styli



Robotic cable

APPLICATIONS



VIN marking



Stainless steel marking



Steel marking

SERVICE & SUPPORT



Training

Our training modules are designed to optimize your use of our solutions and are available for our full range of machines, software and accessories.



Technical support

We bring you local support in your language in more than 50 countries, where we have established presence directly and with our distribution partners.



Maintenance

Thanks to experience gathered with Gravograph and Technifor and our global presence in more than 50 countries with 150 Gravotech technicians and our distributor partners, we can offer you a wide range of services.

MAKE YOUR SAMPLES



TECHNICAL DATA

SV530

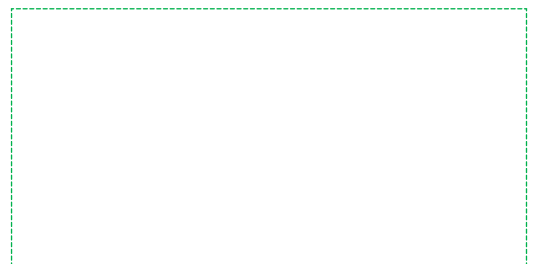
Technology	Scribing
Machine dimensions (L x W x H)	321 x 245 x 239 mm (12.6 x 9.6 x 9.4 in)
Machine weight	27 kg (59.525 lb)
Marking area (L x W)	120 x 40 mm (4.7 x 1.6 in)
Maximum Hardness (HRC)	<62
Communication Interfaces	RJ45, USB (x2), RS232, 8I/4O, Process IO
Embedded fonts type	All fonts in the control unit
Fieldbus (option)	Profinet, Ethernet IP
Controller Display	7" color touchscreen
Operating Temperature	5 to 40°C (41 to 104 F)
Available languages	19
2D Codes	Datamatrix, QR Codes
Emergency stop	Dual-channel management
Power consumption rate	160 VA (Control Unit + marking head)
Input voltage	100 - 240 V AC
Compressed air supply	2 - 6 bar (29 - 87 Psi)



contact@gravotech.com
[+33 \(0\) 4 78 55 85 50](tel:+332478558550)
www.gravotech.com

GRAVOTECH MARKING
466 rue des Mercières - Z.I. Perica
69140 Rillieux-la-Pape
France

Distributed by:



Follow us:



[gravotech.off](https://www.instagram.com/gravotech.off)



[Gravotech Group](https://www.youtube.com/GravotechGroup)



[Gravotech](https://www.linkedin.com/company/Gravotech)



[Gravotech - Gravograph](https://www.facebook.com/Gravotech-Gravograph)